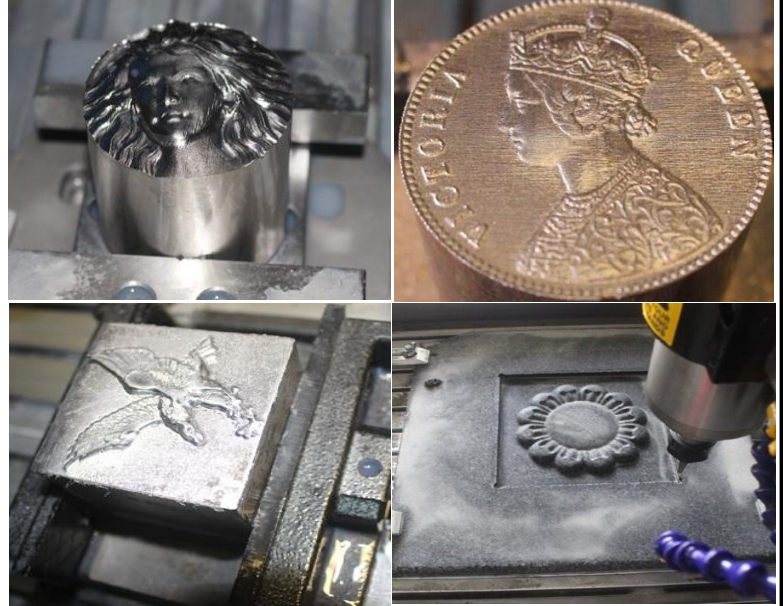


Steel Structure Model 3 Axis 6040/6090 CNC Engraving Machine

SAMPLES



New Version Steel Structure 4060/6090 CNC Engraving Machine

Specification	3/4 Axis 4060 Model	3/4 Axis 6090 Model
Effective working travel	400(X)mm*600(Y)mm*105(Z)mm	600(X)mm*900(Y)mm*150(Z)mm
Shape dimension	720*960*600mm	870*1100*600mm
Work table dimension		# 45 steel
Frame materials		≤105mm
Acceptable material thickness		SFUR1605-DFC7-P0 ball screw
Driving units X/Y/Z axis		Dia.30mm chrome plate shafts
Stepping motor type		57 two-phase 2.5A 55N.cm
Spindle motor		Brand new 2200W water cooling spindle, 24000RPM
Principal axis collet		ER20 1-13mm,
Repeat accuracy		0.05mm
Spindle precision		Radial beat acuties 0.03 mm
Software environment		MACH3 Support windows 10 and below
Maximum speed		0-4000mm/min
Control unit		XHC main board
Computer connection		USB port
Command code		G code, tap, NC, ncc etc.
Protection		Emergency stop button
Operating Voltage		AC220V/110V
Warranty		1 Year for the whole machine, 3 months for the spindle
Package size	One wooden box, 115*98*85cm	One wooden box, 125*98*86cm
Gross weight	150KG	180KG
The 4th axis Size		220(L)*116 (W) *105 (H)
4th axis Center-height		65mm
4th axis Clamping diameter		80mm
Engraving material		Metal, Brass, Acrylic, Wood, Aluminum, Stainless Steel, Wood, MDF, Acrylic

Address: Office No: 367/3Rd Floor, Avadh Viceroy, Sarthana Jakat Varachha Road, Surat-395006, Gujarat
 Mobile: +91 90812 79958/+91 7600 00853, Email: Vijay.kakadiya@shriexim.com/info@shriexim.com
 W: <https://www.indiamart.com/shri-export-import/>